

## PHILIPS BLUETOOTH SETUP

Set up your Philips monitor to export data directly into your incident form using Bluetooth.

**IMPORTANT!** Philips Bluetooth requires Bluetooth, a Toshiba Stack and the necessary Bluetooth hardware on your Windows device. The following steps walk you through locating Bluetooth and the Toshiba Stack on your device, however, the directions do not include ensuring your device has the necessary Bluetooth hardware. You can determine if you are missing the Bluetooth hardware by *opening an incident form > click EKG*. If the next screen never loads, then you are missing the Bluetooth hardware.

### Setup Steps:

1. [Step 1: Check for Bluetooth](#)
2. [Step 2: Check for Toshiba Stack](#)
3. [Step 3: Add the Bluetooth Device in the Philips Monitor](#)
4. [Step 4: Configure Elite Desktop Client](#)
5. [Step 5: \(Optional\) Philips Data Messenger Settings](#)

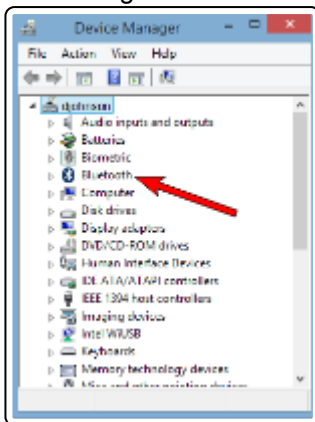
## Step 1: Check for Bluetooth

Prior to beginning Bluetooth setup, it is important to ensure your computer has Bluetooth capabilities.

1. Open Device Manager on your device.

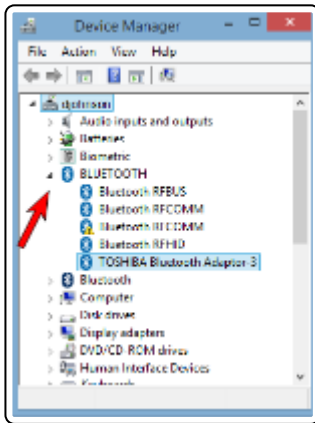


2. If you see Bluetooth in the list you have Bluetooth. If you do not see Bluetooth, you need to select a new method for transferring data.



## Step 2: Check for Toshiba Stack

1. In Device Manager, expand the Bluetooth section. If there are multiple Bluetooth sections, expand them all.



2. Look for Toshiba Stack.

**IMPORTANT!** If you do not have the Toshiba Stack you cannot successfully pair your monitor and transfer data. Contact **Philips** customer support for additional help.

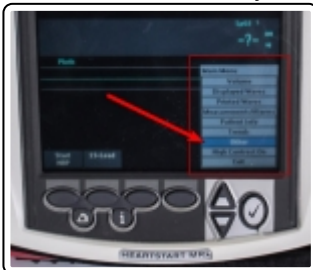
3. Close Device Manager.

### Step 3: Add the Bluetooth Device in the Philips Monitor

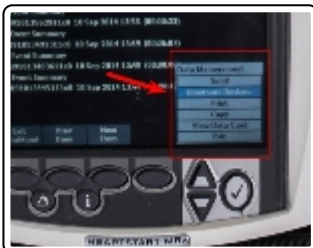
1. Turn the monitor on.
2. Press the *Menu* soft key.



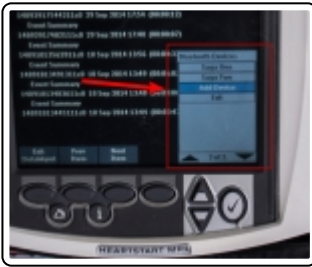
3. Use the arrow soft keys to navigate to and select *Other*.



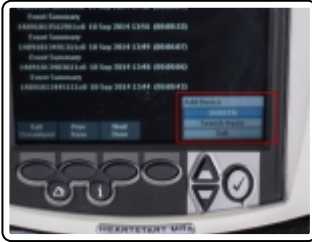
4. Select *Bluetooth Devices*.



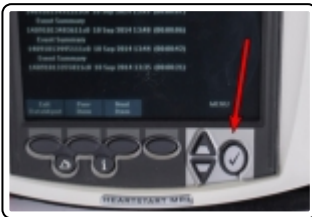
5. Select *Add Device*. The monitor searches for Bluetooth Devices in the area.



6. Select your Bluetooth device from the list.



7. Press the *Menu* to select device.



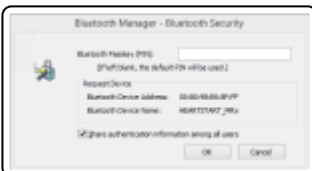
8. Enter a passkey of your choosing.

 **HINT:** 



9. Select *Done*.

10. On the device, in the Bluetooth Manager - Bluetooth Security window, enter the same passkey.



 **NOTE:** 

11. Click *OK*.

12. On the monitor, select *File Transfer*.

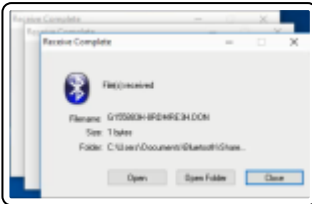
13. Press the *Menu* soft key.



14. On your device, on the File Receive Confirmation window click **OK**. The Transmissions Test Passed message appears on your monitor to indicate a successful transfer.



15. This generates a stack of windows. Leave the window stack open on your device.



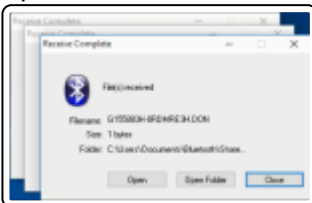
16. On your monitor, press the *Exit Data Mgmt* soft key.

## Step 4: Configure Elite Desktop Client

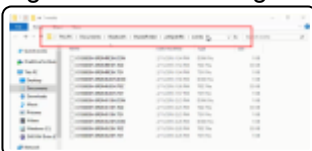
1. Open Elite Desktop Client. If it is not installed, see [Installing the Elite Desktop Client](#).
2. Select the *EKG Transmission Setup* tab.



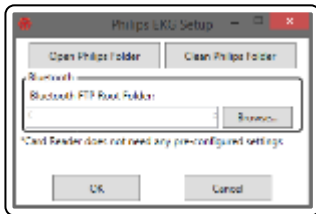
3. Click the *Setup* button next to **Philips**.
4. Open the stack of windows on your device and click *Open Folder*.



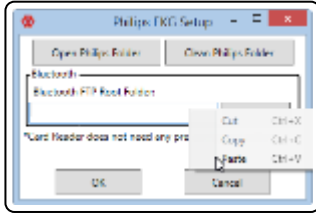
5. Right-click in the navigation bar.



6. Click *Copy*.
7. In the **Philips** EKG Setup, delete the folder listed.



8. Right-click and click *Paste*.



9. Click *OK*.



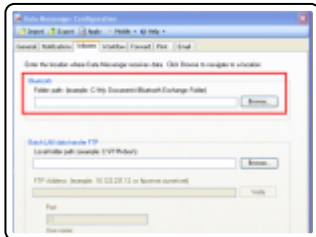
## Step 5: (Optional) Philips Data Messenger Settings

Philips Data Messenger is not required to integrate the Philips EKG monitor with Elite Field. The following are the suggested settings for integration.

1. On your device, open the *Philips Data Messenger Configuration*.
2. Click the *Inboxes* tab.



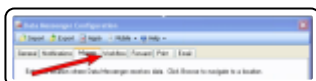
3. In the Bluetooth section in the Folder Path field, enter your Philips Bluetooth directory.



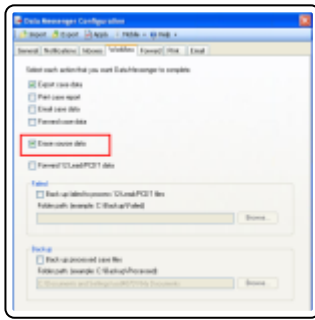
### Recommended Path:

C:\ProgramData\ImageTrend\EliteDesktopClient\Philips\Bluetooth

4. Click the *Workflow* tab.



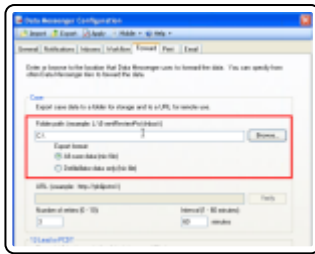
5. Select the *Erase source data* checkbox.



6. Select the *Forward* tab.



7. In the Case section in the Folder path field, enter the path where cases will save.



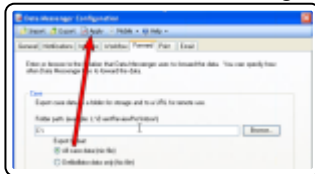
### Recommended Path:

C:\ProgramData\ImageTrend\EliteDesktopClient\Philips

8. Set *Export Format* = *Defibrillator data only (hic file)*.

9. Click *Apply*.

10. Close the Data Messenger Configuration window.



## What's Next?

Add the Waveform Graphic (itVitals.040) data element to the Vitals grid in EMS incident form templates to display waveforms on the incident. For more information, see [Adding Grids to Form Templates](#).

Add the Waveform Graphics data element to report layouts to display waveforms on the incident PDF. For more information, see [Adding Data Elements to Print Report Layouts](#).

Contact Us ▼

Copyright ▼